



PERIOD  
HOMES

80 High Street, Ingatestone, CM4 9DW

t. 01277 288000

e. [essex@periodhomes.co.uk](mailto:essex@periodhomes.co.uk)



**Dark Lane**  
**Great Warley Essex CM14 5US**  
**£1,500,000**



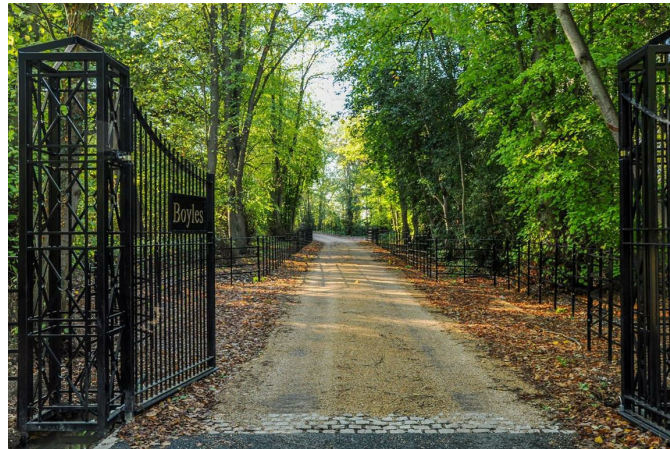
# Dark Lane, Great Warley, Essex CM14 5US

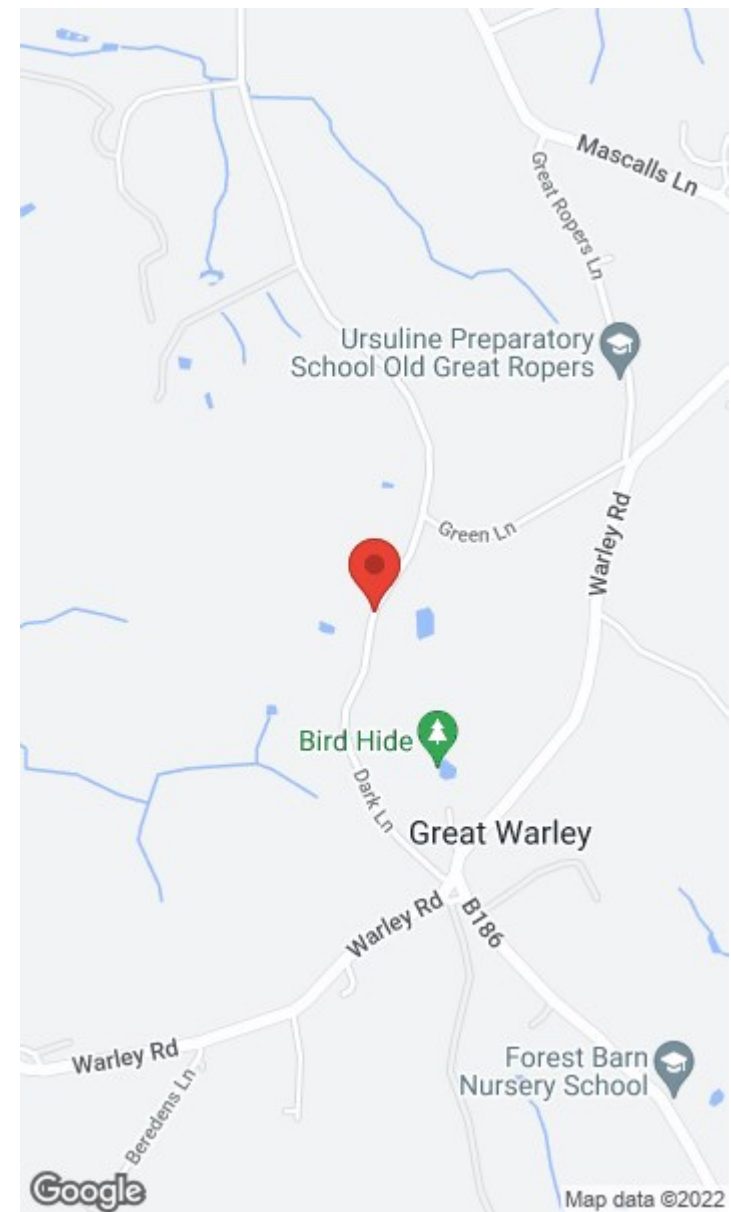
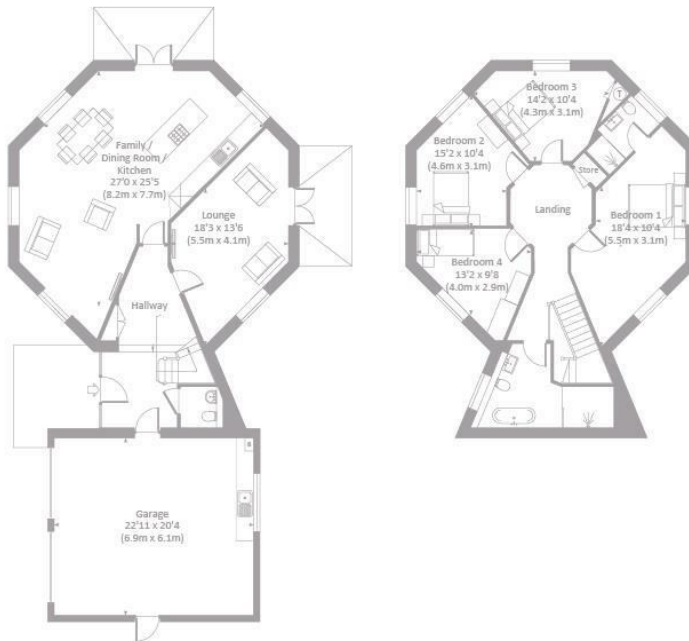
- THE GATEHOUSE AT BOYLES COURT -

Immersed in gently rolling private parkland, Boyles Court offers a fine collection of new & converted homes within classic surroundings amidst the beautiful Brentwood countryside.

The Gatehouse sits proudly at the approach, newly built in an octagonal design, creating a fascinating, highly functional living space with wonderful ceiling heights. This detached residence is arranged over two floors with impressive central spaces and a total of four bedrooms, offering a double garage, private driveway, superb parkland views, and a sizeable garden with raised wraparound terrace.

Built in 1776, Boyles Court is a fine example of ornate Italianate architecture. Now reimagined for the modern age, the development has retained many of the original Grade II-listed building's character features. A collection of 17 new houses offers a range of 3, 4 & 5 bedroom mews houses with superb gardens, creating the unique proposition of owning a freehold property in the grounds of such a fine, parkland estate.





**PLEASE CALL 01277 288000 TO ARRANGE A VIEWING**  
**[www.periodhomes.co.uk](http://www.periodhomes.co.uk)**

**INDEPENDENT ESTATE AGENTS - VALUATIONS WITH NO OBLIGATION - PROFESSIONAL SERVICE**

These particulars do not constitute any part of an offer or contract. All measurements are given as a guide, no liability can be accepted for any errors arising therefrom. No responsibility is taken for any other error, omission, or mis-statement in these particulars. Period Homes, a trading style of Walkers Village and Country Homes Limited do not make or give, whether in these particulars, during negotiations or otherwise, any representation whatsoever in relation to this property.



